



CITY OF ST. ANN, MISSOURI
PUBLIC SERVICES DEPARTMENT
ADA EVALUATION
AND TRANSITION PLAN

Pedestrian Accessibility Survey

The City of St. Ann is in the initial phase of creating an American with Disabilities Act (ADA) Evaluation and Transition Plan. The plan is mandated by Title II of the ADA passed into law on July 26, 1990, for every public entity with over fifty (50) employees. The initial phase of the plan will include an inventory of existing sidewalks, curb ramps and other pedestrian related facilities in the city right-of-way or maintained by the city. The plan will provide guidance on future construction needs to make the city accessible to all citizens. This survey is intended to get public input on the pedestrian routes and travel habits of our citizens and visitors.

Please complete the form and either drop it off at City Hall or mail to:

City Hall
10405 St. Charles Rock Road
St. Ann, MO 63074
Phone: (314) 427-8009

Alternative copies are available upon request. Please contact Travis Helmkamp, Project Manager, at (314) 345-2200 or travis.helmkamp@oatesassociates.com for accommodations.

1. Which of the following statements apply to you? (Select all that apply and mark with an X)

- ☐ I am a resident in the City of St. Ann
- ☐ I am a property owner in the City of St. Ann
- ☐ I work in the City of St. Ann
- ☐ I frequently visit City of St. Ann businesses for entertainment, goods or services

2. What is your age? (Select one and mark with an X)

- ☐ Under 18 years
- ☐ 18 to 35 years
- ☐ 36 to 65 years
- ☐ 66+ years

Pedestrian Accessibility Survey Continued

3. Do you or any person living in your home have any of the following disabilities that affect traveling on sidewalks? (Select all that apply and mark with an X)

☐ Blind or low vision
☐ Difficulty walking
☐ Deaf or hard of hearing
☐ Post-traumatic stress disorder
☐ Development disorder
☐ Managing emotions
☐ Brain injury or other neurological disorder
☐ On the autism spectrum
☐ None
☐ Other (please specify) _____

4. If you use a device or the assistance of a caregiver to get around, please tell us what that device is and/or what the caregiver does to assist you:

5. What is your primary mode of transportation? (Select one and mark with an X)

☐ Car / Van
☐ Bus
☐ Bicycle
☐ Walking/ Wheeling

6. What is your secondary mode of transportation? (Select one and mark with an X)

☐ Car / Van
☐ Bus
☐ Bicycle
☐ Walking/ Wheeling

7. How often do you use city sidewalks? (Select one and mark with an X)

☐ Daily
☐ A few times a week
☐ Weekly
☐ Monthly
☐ Never

Pedestrian Accessibility Survey Continued

8. Which of the following best describes the primary reason that you use City sidewalks?
(Select all that apply and mark with an X)

☐ To access MetroBus
☐ To access Call-A-Ride
☐ For exercise / health / pleasure
☐ To access entertainment, goods or services (groceries, errands, etc.)
☐ Travel to school / church / public facilities (City Hall, libraries, etc.)
☐ Travel to work
☐ To socialize with friends or family
☐ To obtain medical care
☐ Other (please specify) _____

9. Does someone in your household use the sidewalk system to travel to and from school (including using the sidewalk to get to the school bus stop)?

☐ Yes

☐ No

If yes, please list the school that you / your child attends: _____

10. What City of St. Ann government buildings or parks do you frequent the most?

(List three of them that apply)

1. _____

2. _____

3. _____

Pedestrian Accessibility Survey Continued

11. Prioritize the following types / locations of the city sidewalks that should be improved first (Rank in order from 1-8 with 1 being the most critical)

- _____ Residential streets
- _____ Multi-lane streets
- _____ Sidewalk leading to or from schools
- _____ Sidewalk into commercial areas
- _____ Sidewalk leading to or from City facilities (parks, City Hall, etc.)
- _____ Bus stops
- _____ Intersections
- _____ Traffic signals at intersections

12. Please list up to three locations where you have that difficulty navigating the city:

- 1. _____
- 2. _____
- 3. _____

13. What conditions along city streets / sidewalks affect your walking habits?
(Rank in order from 1-5 with 1 being the most critical)

- _____ Proximity to motor vehicles / drivers
- _____ Difficult / unsafe street crossings
- _____ Sidewalks in poor condition
- _____ Missing or difficult curb ramps
- _____ Obstructions

Pedestrian Accessibility Survey Continued

14. Please complete the following photographic sidewalk evaluation survey. Rank the following obstacles / conditions 1 through 6 in order of impact to your daily travel (1 being the highest impact and 6 the least impact). Photographic examples provided below.



_____ Trip Hazards (uneven sidewalk panels)



_____ Poor Surface Quality (broken sidewalks)



_____ Obstructions (utility poles, fire hydrants etc.)



_____ Steep Cross Slope (sidewalk is not flat)



_____ Non-Continuous Sidewalks (sidewalk starts and stops)



_____ Encroachment trees, bushes etc.)

Pedestrian Accessibility Survey Continued

15. Please complete the following photographic curb ramp evaluation survey. Rank the following obstacles / conditions 1 through 6 in order of impact to your daily travel (1 being the highest impact and 6 being the least impact). Photographic examples provided below.



_____ Obstruction (utility poles, fire hydrants etc.)



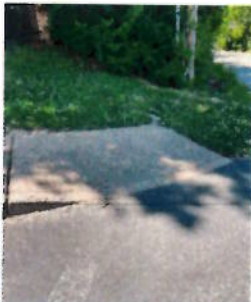
_____ Standing Water/ Debris
(standing water, ice accumulates in winter)



_____ No Curb Ramps (6 inch drop off the sidewalk)



_____ No Detectable Warning
Panels (bumps at the bottom of the curb ramp)



_____ Curb Ramp Grades (steep slopes)



_____ Broken curb ramp (uneven walking surface)

Pedestrian Accessibility Survey Continued

16. Please identify any specific difficulties or constraints along the routes you normally take:

17. If you have a disability or travel with someone who has a disability, what accessibility problems have you experienced along the City's sidewalk and pedestrian facilities?

Thank you for your participation!

For more information, contact Travis Helmkamp, Project Manager, at:

E-mail: travis.helmkamp@oatesassociates.com

Phone: (314) 345-2200

The City of St. Ann is in the process of creating an ADA Evaluation and Transition Plan on sidewalks and curb ramps throughout the city. A critical element of the Plan is gathering feedback on the pedestrian routes and travel habits of citizens and visitors. A short survey has been created to gather feedback and gain a better understanding of challenges faced on the city's sidewalks. The survey can be found at <https://www.surveymonkey.com/r/StAnnADA>.

Upon request, reasonable accommodations will be provided in completing this survey. Contact Travis Helmkamp, project manager at Oates Associates, at 314-588-8300 for further assistance.